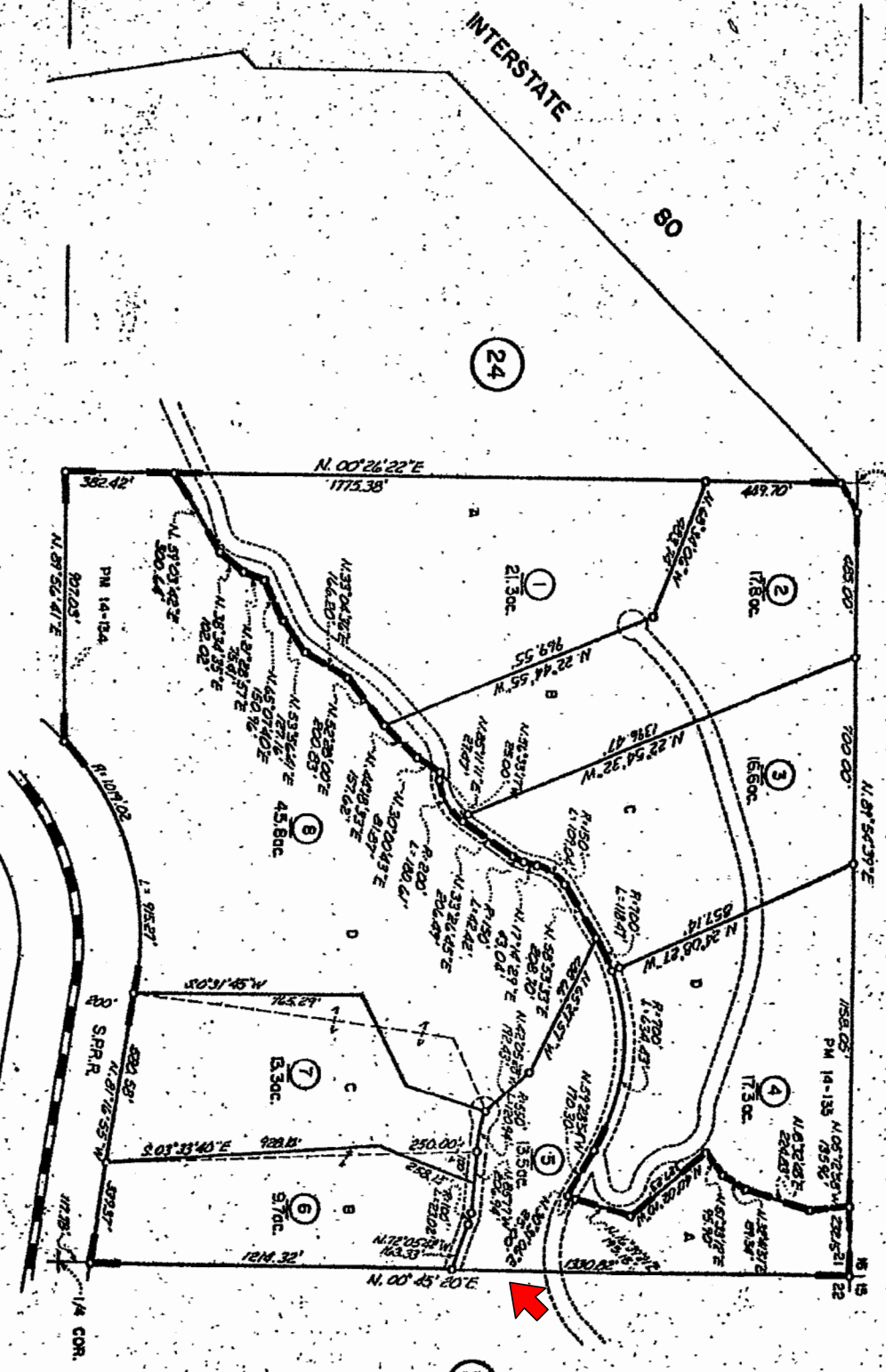


NE 1/4 SEC. 21, T16N, R11E, MDM.  
 Parcel MOR. Bk. 14, Pg. 134, P-72768  
 Parcel MOR. Bk. 14, Pg. 135, P-72765

62-53



NOTE-Assessor's Block Numbers Shown in Ellipses.  
 Assessor's Parcel Numbers Shown in Circles.

Assessor's Map Bk. 62-Pg. 53  
 County of Placer, Calif.